



Access Management for Data, Products, and Facilities

SIOS

Ole Jørgen Lønne
SIOS Knowledge Centre

Access to research infrastructure

- The Research and Infrastructure Coordination Committee (RICC), consisting of SIOS internal experts and station managers
- Better and open access to research facilities and observation equipment based on a peer review



D4.6 Access to SIOS Infrastructure - Approaches and Financial Models

- Contract between the partners on the joint access scheme
- Observational programmes Earth System Science (ESS) focus
- Projects that complement and help explain the observational data.
- Open to both SIOS partners and non-SIOS researches
- Involve all the Svalbard settlements and offshore infrastructure (ocean observatories, ships).
- funded and in-kind access schemes
- Two approaches
 - Coordinated multi-project approach (SIOS priority topics).
 - Open scheme (best ESS-related research)

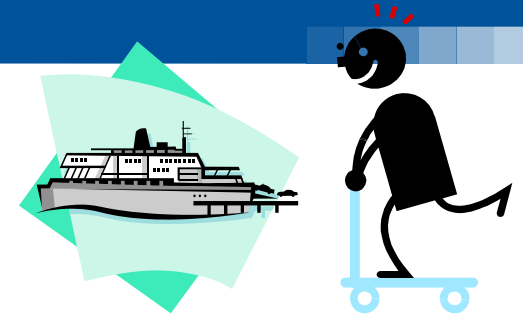


Data access management

- monitoring of access
- data use tracking.
- Key performing indicators?
 - What is useful?
 - What is possible?



Logistical services



- Integrated and better logistical resources
- overview of research sailing/expedition routes and field campaigns
- Access to office/internet etc. in LYB.



User tracking and access restrictions

- Web-portal
 - One entrance – the place where all services are integrated and visualised
 - Booking possibilities
 - Applications
 - General information on research in Svalbard etc.
- RIS (SSF)
- Governor of Svalbard
- User tracking
- Access restrictions
- Commercial use of data and products



Training



- Tailor made courses in use of infrastructure and interpretation of data



Thank you



facebook.com/UNIS.Svalbard



[@UNISvalbard](https://twitter.com/UNISvalbard)



[UniSvalbard](https://www.instagram.com/UniSvalbard)

Photo: Anja Fleig